



NOMADS TIDE

December 2014



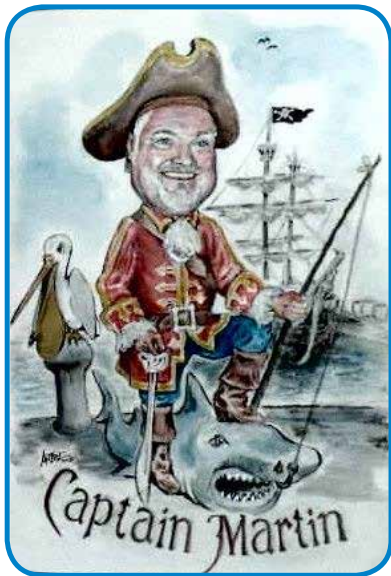
Nomads Gamefishing Club
P.O. Box 13899 Northmead
Benoni
1511
nomadsfishing@gmail.com or info@nomadsfishing.co.za
website: <http://www.nomadsfishing.co.za>
<https://www.facebook.com/nomads.gamefishing.1>



In This Issue

- SADSAA Calendar
- Rosebowl News
- Protea Highlights
- Braai Day
- Laws for Mozambique
- Nomads Closed
- Deep Sea Tri-Facet
- Club History
- Articles - Can Fish See Colour
- Recipe of the Month

From the Helm



Good Day Fellow Nomads,

The Closed at Cape Vidal in October was certainly a positive spike in this years' calendar and if the feedback from the participants is anything to go by, I believe that the committee are on a winning recipe for future competitions. While the committee did a great job, accolades must go to all who attended for their jovial camaraderie ship, unrelenting enthusiasm and for their pure and simple hard core Nomads gees! If the spirit and fun had by all at this comp is anything to go by, I am proud to say that Nomads is alive and well and kicking very strongly and I look forward to a strong future with Nomads. It was great to see so many family supporters as well! A special thanks must

go to Craig Shorter of The Insurance Group for driving the Hollard's sponsorship and for gracing us with his presence at Cape Vidal. Craig assures me that we will be seeing more of him in the near future. Thanks again Craig.

Our next major event is the 2015 Southern Gauteng Interclub, or Rosebowl as it is fondly known as, hosted by ERBFC at Durban. While there has been much debate about the choice of venue, I remind you that it is the prerogative of the hosting club to decide on the venue and we must respect this and accept the challenge without looking for excuses. It is my wish that all active members accept the challenge and come out with guns blazing in true Nomads spirit, to fight for the bragging rights once again as the champions we are, irrespective of venue. Personally, I am looking forward to the comp in Durban and already there has been talk about holding workshops to familiarise skippers and anglers with the methods best used to catch fish in Durban and this on its own is beneficial to us all as individuals in our quest to become better anglers. Besides, it promises to be a whole lot of fun too – my accommodation is already booked!

Everyone has been pretty hectic lately and the silly season is now upon us. Until then, tight lines... but not too tight!

Yours in angling
Dave Martin
Chairman

Catch it on Cam



Your Nomads 2015 Committee

Thank you to all members who attended the AGM on 19th November

The AGM, Minutes & The Chairmans report are available at www.nomadsfishing.co.za



A warm welcome to our new secretary Bianca

- Dave Martin - **Chairman**
 - Wynand Wiering
 - Ivor Matthee
 - Colin Green
 - Tyron Gruar
 - Alex Lockyer
 - Werner van Rooyen
 - Mark Cockcraft
 - Bianca Juchau
- [Ian Van Zyl - **Webmaster**]

SADSAA Selctions

	Nomads	Makaira	ERBFC	Albatros	Guinjata	TSC	
Inter-provincial	11	12	10	11	3	7	54
SADSAA	3	1	2				6
Protea	3	5					8
	17	18	12	11	3	7	68

Nomads members continue to nominate and achieve selections at the various levels

BOAT TESTING AT THE CLUB





2015 Rosebowl News

35th SGDSAA INTERCLUB



July 2014

Durban Ski-Boat Club, sends warm welcome to SGDSAA for the Interclub 2015

Firstly we are very honoured that you have considered our club as your venue for such a prestigious event. You can rest assured that we have the physical resources, well organised and committed management to "do you proud".

We in Durban recognise the fact that our club and facilities not only belong to our members but we have a greater responsibility to anglers all over SA and further a field to ensure they can enjoy the ocean, and have a happy Durban fishing experience. We embrace visitors, who more often than not become members whilst they are with us. In a nutshell you will become part of the DSBC family.

I will put in point form what we can offer you to add value to your members, and your event:

1. You will have full hospitality in the sense you and your families must just make themselves at home.
2. We will issue all participants and guests with entry cards.
3. Secure parking will be made available for all boats and vehicles.
4. We can arrange mechanics to be on standby if any engines start playing up.
5. 3 tractors will be available for launching and retrieving boats at no cost. We also have push poles for those who prefer looking after their trailers. Please note our tractors are not fitted with winches but members can use their own vehicles to trailers their boats. Members can also use their own vehicles to launch boats. It is a soft and safe launch site with plenty of room.
6. Members are welcome to camp on the DSBC premises at no cost. The club is open 24/7 so the showers and toilet facilities are available 24/7.
7. For the duration of the competition we will have a dedicated coffee bar with rusks early morning, this will be included in your entry fee.
8. Although DSBC has professional security, additional security will be hired for the duration of the competition to ensure the safety of your boats and vehicles.
9. DSBC has a kitchen which will be open for meals during the day, and night, (all evening meals will be provided for all participants in your entry fee). We also have 2 bars--- a wet bar downstairs, and an upper bar with a deck and magnificent views. There is also a top dining room, linked to the upper bar and top deck.

10. An area for boat washing will be arranged.
11. DSBC has a radio room with a VHF and 29MGH, with 2 retired, experienced radio controllers who will assist with the call ups, they also have a strong relationship with NSRI Durban (Station 5) incase of emergencies.
12. For the blow out days there is plenty to do in Durban, Ushaka and the Aquarium is next door, and plenty of restaurants and watering holes.
13. DSBC also has a grass patch in the front of the club house, that has braai facilities (for those wishing to do thier own cooking), we provide the fires but please support our bar while you braai. Gazebos are also provided to keep the hot sun from burning those Gauteng bodies!
14. DSBC prides itself in being a family club as well as a fishing club, so we make sure our facilities cater for Mums, Grandparents and all the children. So bring the family along and have a week in the sun having fun with your Province.

2015 Rosebowl 16 - 20 March 2015

Please note the format is very different to previous comps

Please go to the Nomads website for entry form and info.

**Venue:
Durban Ski-Boat Club**

**Hosts:
East Rand Boat Fishing Club**



Protea Highlights

GUATEMALA 2014

- * Dave Martin (Capt.)
- * Jaco Lingenvelder
- * Anton Lingenvelder



PUERTO RICO 2014

- * Dave Martin (Capt.)
- * Eric Visser
- * Johan Lange



The Guatemala ILTAA Championships

Our men in green & gold with 2 Silver medals.

That's right, they have beaten 31 teams from 10 countries (total was 33 boats) to take the prestige's second place in the Guatemala 74th ILTA Billfish competition. **AND** to add to this wonderful achievement, Anton Lingevelder also took the **SILVER** for the second best angler of the competition – **so they have brought home TWO SILVER awards !!!**

They were in 1st place on the third day of the competition and were unfortunately beaten by Venezuela with **ONLY** two fish **BUT** we are still proud of our Protea Anglers !! As anglers, we know anything can change, especially when there is such a close competition with the front runners.

They also had a tremendous amount of support from all the countries who participated, everyone wanted **SOUTH AFRICA** to win. Bringing home the **SILVER** – from angling with the best of the best – **THAT IS AN ACHIEVEMENT** on its own.



Certificate



Americans Have Thanksgiving
 French Have Bastille Day
 Irish Have St Patricks Day
 Australians Have Australia Day



South Africans have National Braai Day!!

One common heritage all South Africans share is when we have something to celebrate we light fires and prepare great feasts! We liken this initiative to annual celebrations cherished by other leading nations of the world. National Braai (Heritage) Day, is set aside for all South Africans to celebrate our rich heritage



Lamb on the Spit, Chicken Flatties on the braai grid, Music, entertaining conversation, beers and laughter were the order of the day.





NOMADS members united to celebrate our rich heritage and spent a wonderful day at our clubhouse alongside the dam.



Enough said – let the photos speak !!!



Mozambique Information

New launching laws for Mozambique.

Additional fishing inspectors and patrol boats have been recruited and will be patrolling the coast.

Boats will be impounded if the required certificates, etc are not obtained.

Boats need to be passed and a navigation certificate issued. A new safety item (crook) must be on the boat without this a 2000mt fine is enforceable.

This can be done in Maputo or enquire in advance from your lodge if this can be done nearby.

Please see the list of road rules and the fines that can be imposed below:

Border crossing and self drive travel in Mozambique made easy – a step by step procedure

General information

Visas, Passports and Travel documentation.

You will require a valid passport which is valid for at least six months after the date of your return to South Africa.

You will require a valid driving license.

Visas are not required for South African nationals for stays of less than 30 days.

Make certified colour copies of your Passport, Drivers license, ID Document and vehicle registration papers. It is a good idea to laminate these copies. (Keep these copies in a separate location to your original documents)

If your vehicle is subject to a financial lease/hire purchase or loan agreement you will require a letter of authority from the financial institution giving you authority to take the vehicle across the border into a neighboring country.

If the vehicle that you are driving is not yours you will require a letter of authority from the registered owner giving you permission to be in possession of the vehicle and authorizing cross border travel.

Third party insurance can be obtained prior to your departure from most of the major insurance companies. Outdoor Warehouse retail stores in South Africa sell the Hollard Insurance product available at their retail outlets nationwide. The current cost of this insurance is R 150.00 per vehicle and R80.00 for a trailer. When taking out this insurance you will require your Passport and your Vehicle and trailer registration particulars. (Registration Number., VIN and Engine Number)

Import duty, Goods temporarily imported in Mozambique.

You may make a declaration on the form provided to the effect that you have nothing to declare in excess of your personal goods, personal effects and that you have no commercial goods, firearms or prohibited and restricted items.

If you are importing any goods into Mozambique make a full declaration and present your original invoices to the customs official.

You will be required to complete a DA65 Form (often re-

ferred to as a TIP – Temporary import permit) at the customs desk for all goods that you are temporarily importing into Mozambique. Typically you would declare the following items.

- Digital cameras, lenses and accessories
- Video cameras and accessories.
- GPS equipment (Garmin, TomTom, etc.)
- Laptops and accessories
- Portable televisions
- I-Pod docking station, I-Pod and accessories.
- Hi-Fi's, Radios, Music System
- Microwave (if camping)
- Camping equipment
- Fishing rods, tackle & equipment
- Paddle-skis, Kayaks, Canoes.
- Boats
- Bicycles
- Quads
- Motorcycles
- Jet-skis
- Yachts
- Generators
- Car Freezer/Fridge
- Desktop PC, Screen, keyboard and Printers
- Camping stoves, gas braais.
- DSTV decoder
- Portable DVD player
- Portable compressor.

Remember that if you have declared an item for temporary import you must bring that item back with you when you exit Mozambique. If the customs officials discover that an item is not present you will either have to return to fetch the item or customs will declare the item imported and you will have to pay a fine and the import duty on the item before you leave the country. Your passport will be retained until these requirements have been met.

Remember that your vehicle contents and baggage may be subject to an inspection regardless of the type of declaration that you have made. In general all vehicles and trailers have to be inspected by a customs official on the Mozambican side in order to obtain a signature on your gate pass. This gate pass will be checked by the gate guard to ensure that firstly you have a customs stamp on it and secondly that you have a customs inspector's signature on it prior to allowing you access into Mozambique.

Goods for which a permit or license is required:

- Fire arms, explosives and fireworks.
- Animals, hides, skins, animal products & animal parts.
- Gold, Silver, Platinum in coins, bars or ingots.
- Plants, roots, tubers and medicines.

Items which are prohibited or restricted may include the following:

- Narcotic drugs
- Firearms
- Explosives
- Pornographic materials and media
- Counterfeit goods
- Plant materials
- Meat products

(You may take your own meat with you for personal consumption, make sure that it is frozen and properly sealed or vacuum packed.)

Travelers import Allowances

Individual duty free allowances Mts 5000 per person (Approx R 1500) are allowed monthly in respect of goods imported into Mozambique for your personal and family consumption only. RETAIN slips and present such when making border declaration.

- **Alcoholic beverages - 1 Liter of spirits per person. 2.25 liters of wine (3 standard bottles).**
- **Tobacco products – 200 Cigarettes or 100 Cigarillos or 50 Cigars.**
- **Perfumes – 50ml of perfume or 250ml of Eau de Toilette**
- **Pharmaceutical products – Quantity considered reasonable and appropriate for personal consumption or as prescribed by a registered medical practitioner.**

No beer is allowed to be imported into Mozambique.

Foreign Currency and Cash arrangements

When entering Mozambique you need not declare up to US\$ 5,000.00 or the equivalent, in cash or travelers cheques. Above this limit you are required to make a declaration to the customs officials of Mozambique (Alfandegas)

Arrange with your bank that you have sufficient facility on your credit cards, debit cards or travel cards to cover all your travel expenditure. Local currency can be drawn at most ATM's in Mozambique bearing the VISA, MasterCard or Maestro logos. Some ATM's restrict the amount of cash that can be withdrawn per transaction. Ensure that you have set an adequate daily withdrawal limit on your cards with your domicile bank prior to your departure. Remember your PIN codes.

It is always safer to obtain cash from an ATM, a registered money changer or a commercial bank. Avoid using the touts at the border post. These cash vendors work in pairs, offer you an attractive rate (normally a couple of points above the going rate) and once the transaction is underway have an amazing repertoire of techniques designed to distract you and fleece you of your money. Beware!

The Procedure to be followed when crossing the Lebombo Border post (RSA) and Ressano Garcia border post (Mozambique)

After you have left Komatipoort proceed over the Crocodile River bridge and head up the hill to the Lebombo border post. (approximately 2 kms)

The Lebombo border control post (South Africa)

As you approach the border post you will see a gate in front of you (normally open). Proceed slowly through the gate into the border post. Keep left and drive right up to the border control office building. Park your vehicle as close as you can and have the following documents and items ready.

Pen Passports (all travelers must report to the passport control officer) Vehicle documents (The information is required to fill in some of the forms) You WILL BE approached at this point by a tout offering you assistance and promising a speedy passage through the Mozambican border. Do not use these people; they are not official (even though it might appear that they have ID Tags...) rather do it yourself.

Step 1 Go directly to the customs desk and obtain the following forms. Gate pass – Fill in your vehicle particulars and the number of persons in your vehicle. The gate pass must be stamped by the customs official. Temporary export permit (DA65). On this document you will specify all easily identifiable items that you are taking into Mozambique with you and that you will be bringing back to RSA. Fill in this form and re-

turn it to the customs desk for checking and stamping by the customs official. The customs official will remove one page from the document and return the permit/declaration to you. (Keep this document safe as you will require it when you return to South Africa)

Step 2 Proceed to the passport control desk (immigration) with your gate pass, DA65 form and your passports. The immigration official will require that each person is identified when processing the passports. Ensure that your gate pass is stamped. Ensure that each passport is stamped. Check that you have all the documents with you that you brought into the border control office.

Step 3 Leave the Lebombo border post area hand your gate pass to the customs/police official as you exit and drive slowly down the hill to the Ressano Garcia border (Mozambique).

THE RESSANO GARCIA BORDER CONTROL AREA (Mozambique)

Step 1 The Mozambican gate pass as you approach the gate between the Lebombo border and Ressano Garcia border slow down and look out for the gate guard on the Mozambican side. Stop a little short of him so that he may write down your vehicle registration on the gate pass slip and take note of the number of occupants in the car. The guard will hand you the completed gate pass. Be friendly and greet the guard courteously.

Step 2 Proceed up the hill towards the border control building. The border may be congested and a number of large trucks will be parked up the road in a line. Do not park behind the trucks, pass them on the left or on the right and park on the left as close to the passport control building as possible. At this point you will most probably encounter numerous touts hassling you, offering you passport assistance, the opportunity to change money and generally all types of facilitation services. Ignore all of these offers and courteously decline the services. These guys are persistent and sometimes it feels like mayhem!

Step 3 Third party insurance

If you have not arranged the compulsory third party insurance you will need to do this first. There are a number of cabins on the left hand side opposite the passport control building where you will find a number of Insurance offices. We recommend using Hollard Insurance (Hollard Seguros – Moçambique). You will need some cash and all your travel and vehicle registration documents. Insurance can be paid in ZAR. Current costs – R150.00 per vehicle and R 80.00 for a trailer.

Step 4 Get all your documents together, have a pen with you and proceed into the passport control office and go directly to the customs/"vehicular" desk. Ask the official for the vehicle import document. The document is a two page form with a piece of carbon paper.. Fill in this form, return it to the official who will stamp it, return the top copy to you and he should also stamp your gate pass. Present any other documents to the official if requested to do so. Proceed to the passport control desk (all travelers). Check Documents. At this point you should have the following stamped documents with you. South African export permit/declaration. Mozambican import permit

Third party insurance document
Mozambican gate pass/customs slip
Passports (CHECK DATES CORRECT)

Step 5 Exit the passport control building and locate a customs official (The customs officials wear a beret and light blue shirt with a name tag "Alfandegas"). Indicate to the official which is your vehicle. The official is required to inspect your vehicle and trailer before signing your gate pass. This inspection can be cursory or thorough depending on how busy the border is, if you are rude or any number of trivial reasons. Be patient and be courteous always. Please ensure that you have declared obvious items like a car fridge, generator, etc. You will be fined and kept waiting, sometimes for hours if the official discovers illegally imported goods. After this inspection you may get in your vehicle and proceed to the exit gate.

Finally – Entering Mozambique

Step 6 At the Ressano Garcia border control exit gate you will be stopped by the gate guard. Present to the guard your stamped and signed gate pass/customs slip. After the guard has checked that your gate pass has a passport and customs stamp on it plus the signature from the inspecting official you will be waved on, through the gate and into Mozambique. Beware! If you have paid a "facilitation fee" to a customs official to waive your vehicle inspection do not be surprised if another customs official at the exit gate conducts a secondary inspection non-withstanding that you have a signed gate pass. The customs officials are in cell phone contact and will often phone through your vehicle registration to the exit official if they feel they could extract a bit more cash from you. This scam is used to hit you with a double whammy – your "facilitation fee" plus an "unofficial fine" if any undeclared goods are discovered.

Keep to the speed limits and respect the rules of the road.

The national road going North (EN1) is the main transit artery. Everybody uses the road, locals on bicycles and foot, donkey carts, crazy taxi drivers, huge lumber trucks normally with a small herd of goats tethered on top, trans-africa busses that crab sideways down the road, animals, vendors and most importantly children.

The national road (EN1) going North passes through each city, town or village and at each settlement you will be required to firstly **slow down to 80km/h and secondly to 60km/h** or less as you proceed through the town. The traffic police love to set up speed traps at these locations so beware! **You can expect a minimum fine of Mtn 1000.00 if you are caught speeding even if you are only 5km/h over the limit.**

Please NOTE later section as regards fines. DO NOT PAY BRIBES when you are in the wrong. Pay what is due and request an official receipt.

Schools are often located at the outer limits of each town and you will sometimes encounter hundreds of scholars walking along the road from little toddlers to young adults. **Kids are unpredictable** and often little games are played by the kids as they chat and walk to and from school. Drive very defensively; give the kids a wide berth by moving to the centre of the road when necessary. Hoot repeatedly if you think a group are being distracted by games, laughter or simply being unruly and have not noticed your vehicle approaching. Watch their body language.

Drive Safely - Do not let your holiday begin or end in tragedy!

Travel Documents

Keep all your travel documents in an A4 folder/bag in an easily accessible position while you are travelling.

There are a number of traffic police (white shirts) and police (grey shirts) checkpoints on the National roads and in and around Maputo and along the EN1 going North. You may

be stopped and asked to present your travel documents. Be courteous, smile a lot and present the required documents as requested. Ensure that before you proceed you receive all your documents back. In Mozambique towards your holiday destination. Then it is up to you to Relax, unwind and enjoy! Have the most wonderful experience in Mozambique

Emergency numbers in Mozambique

Anti-corruption Hot Line+258 82 965 7804 +258 213 106 93

Tourism GREEN LINE for HELP or

ADVICE+258 800 460 460

G.C.C.C - PATRULHA+258 800 460 460

(This is # for Corruption Control)

South African High Commission, Maputo+258 21 24 3000 - office hours+258 84 304 4600

After hours emergencies

Police: Maputo: +258 21 32 5031, +258 21 400 159

Nelspruit: +27 13 759 1000

Ambulance: Maputo: +258 21 32 5000 or +258 21 32 5009ER
24 Maputo: 84 124

Nelspruit: +27 82 911

Hospitals: Maputo: +258 21 32 5000 or

+258 21 32 5009 +258 84 389 0486

Mediclinic (Nelspruit) +27 13 759 0500

We highly recommend our clients to check **DriveMoz on Facebook** where a wealth of travel advice can be found and files downloaded. On the site you will also find details of the Zello walkie talkie application that will enable you to stay in contact with persons in Moz that can assist you.

Traffic regulations & fines

There are different officials on the road performing specific functions and controlling various elements. The information contained herein will provide for a more friendly and courteous interaction between officials and road users.

When stopping for an official, please indicate, stop and turn on your hazard lights. Kindly turn down the music and remove your sunglasses. The officer will appreciate this small token of respect.

• Officers in White Shirt and Blue Trousers - Traffic

Police - shall carry identification, with their name and number visible on their uniform - are permitted to fine you for any traffic violations as listed in this table.

Please insist on the written fine and do not initiate a bribe. This will ensure that you are not extorted from and pay the correct fine. Help stamp out corruption.

• Officers in Light Grey Shirt and Dark Grey Trousers

- Protection Police - are NOT permitted to fine you for any violations. They are allowed to take you to the police station for arrest only if you are found carrying stolen goods or illegal substances or contraband, or for theft or assault. They normally work together with the traffic police.

• Officers in Dark Green - Rapid Intervention Police - similar to duties to Protection Police

• Officers in Light Green Shirt and Green Trousers with Red Armband - Taxi Police - are only permitted to check taxis.

• Officers in Light Blue Shirt and Blue Trousers - Algodaga/ Customs - permitted to search vehicles for undeclared items.

• Military - Allowed to search vehicle at roadblocks or border posts.

Below are telephone numbers if you find yourself in any trouble. If you are treated unfairly call the number below and/or write down all details and hand in at your tourism destination.

Do not be intimidated - use this document to your benefit.

Anti-corruption: +258 82 396 9890

ER24 Maputo: +258 84 124 3724
RSA High Commission: +258 21 49 0059/3030
After hours: +258 84 304 4600
TRAC N4 Toll Route Emergencies: +258 82 303 4303

Border/customs

- Obtain vehicle voucher at the gate and park.
- "Runners" are not government officials. No official fees are payable on either side of the border for the completion of documents. It is advised not to use them.
- Individuals to have their passports stamped in the office
- Driver to have the vehicle voucher stamped in the office
- Driver to obtain a vehicle form, complete it with information of the vehicle, boat, trailer and electronic equipment and have it stamped in the office
- For duty items go to the duty counter, declare goods and pay duty. Keep documentation the duration of travel as proof of payment
- Proceed in your vehicle to the gate and hand in your vehicle voucher
- Customs officials are at liberty to search your vehicle
- If you are caught with undeclared items they will be confiscated

Traffic Violations & Fines MTN (Road Decree 1/2011)

1. None compliance to permanent and temporary traffic road signs (Art14) 1000
2. Drivers shall not drive with any part of their body outside of the vehicle (Art16) 1000
3. Not reducing speed at:
 - Hills, bends, intersections, circles, bridges, tunnels, villages, buildings, schools, people, animals, places of reduced visibility, signposted as danger/perigo (Art32) 1000
4. Speed limits: (Art33)
 - Small passenger vehicle w/o trailer in towns 60km, out of towns 120kmph
 - Small passenger vehicle with trailer in towns 60km, out of towns 100kmph
 - Goods vehicle in towns 60kmph, out of towns 100kmph
5. Fines for exceeding the speed limit (Art33)
 - Exceeding max limit up to 20kmph 1000
 - Exceeding max limit up to 40kmph 2000
 - Exceeding max limit up to 60kmph 4000
 - Exceeding max limit more than 60kmph 8000
 - Exceeding max limit more than double prison from 3 days to 3 months plus fine 8000
6. Speed cameras must show speed travelled and date and time of offense
7. Exceeding seated passenger limit (Art55) 500
8. Cargo reducing driver visibility (eg canoes must face up) or protruding the length or width of the vehicle (Art56) 1000
9. Not having correct or working illumination, light signally devices, reflectors, lights, blue & white towing sticker (Art59,60) 1000 to 2000
10. Failure to use emergency lights with vehicle breakdown or tow (Art63) 750
11. Ignoring traffic signals (Art69) 1000
12. Throwing objects from vehicles (Art78) 500
13. Having alcohol inside the vehicle and not in the trunk/boot (Art81) 500
14. Driving under the influence of alcohol, when tested by breathalyzer (Art81)
 - From higher than 0,0mg/l, to 0,3mg/l 1500

- From 0,3mg/l to 0,40mg/l 2500
 - From 0,41mg/l to 0,70mg/l 3500
 - More than 0,70mg/l 5000
 - More than 1,2mg/l - prison sentence up to 1 month plus fine
 - A public transport or dangerous cargo driver, if over 0,0 mg/l - prison sentence of up to 6 months plus fine (Art81)
15. Driving under the influence of narcotics or psychotropics (Art81) 2000
 16. Failure to fasten seat belt while driving, front and back (Art87) 500
 17. Children under the age of 12 not transported on the back seat and secured with system for their height and weight (fine for each child) (Art87) 300
 - Children under 3 can travel in the front seat if using a back facing retention system (Art87)
 18. Drivers and passengers of motorcycles not wearing helmets (.Art87) 300
 19. Driver using any audio headphone or radiotelephonic (cell phones) device without headset with microphone/ loudspeaker (Art89) 2000
 20. Prohibited to use equipment/ devices to detect instruments for recording of offences (radar detectors) - devices can be confiscated (Art89) 2750
 21. Failure to have 2 safety triangles and 1 reflective jacket (Art91) 1000
 22. Driving an unregistered vehicle (Art120) 5000
 23. Driving an unregistered trailer (Art120) 2500
 24. SADC drivers licenses are valid (Art129)
 25. Driving incorrect vehicle to drivers license 1000
 26. Having a drivers license but not carrying it with you (Art127) 200
 27. Not being qualified to drive (never taken test and received license) prison sentence of 3 days to 6 months plus fine (Art127) 5000
 28. Driving with an expired license (more than 30 days) (Art127) 5000
 29. Not complying with medical restriction of drivers license (Art127) 2000
 30. Failure to stop after causing an accident or abandoning injured/deceased persons - prison time of one to eight years (Art152)
 31. Failure to have 3rd party insurance (Art157), in case of an accident vehicle will be seized (Art162) 500
 32. Seizure of drivers license (Art160)
 - When license has expired
 - When license has been suspended
 - When driver under the influence
 - Suspected it is falsified
 33. Seizure of vehicle documents (Art161)
 - When the vehicle is seized
 - When the papers are illegible
 - When the vehicle is unsafe
 - Number plates do not comply with regulatory conditions
 - When characteristics of the vehicle (including tyre measurements) do not match those on the papers
 - Suspected they are falsified
 34. Regarding above, the official will issue a note as a substitute for a time and restrictions set thereon, eg-for the vehicle to be taken for repairs and must be returned repaired within a= maximum of 8 days (Art161) 1500

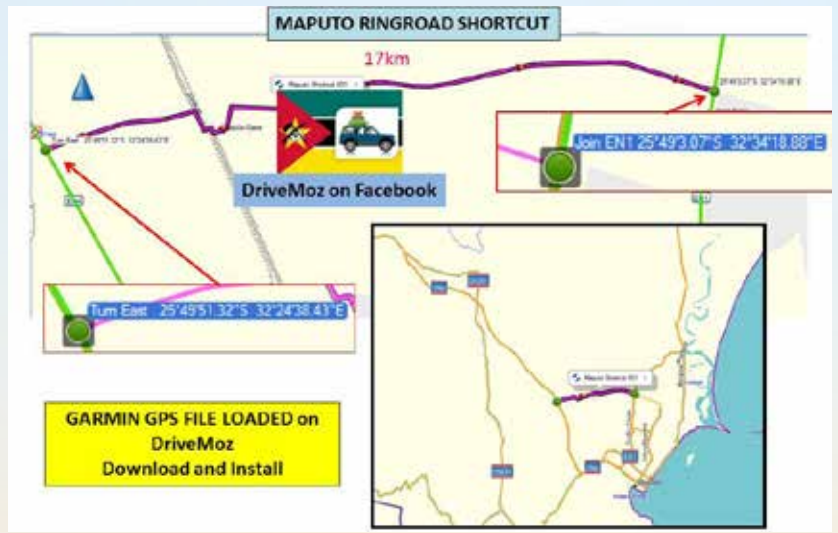
35. Seizure of vehicle (Art162)

- Vehicle not conforming to registration specifications
- No number plates
- An accident has been caused without 3rd party insurance

36. Voluntary compliance / payment of fines must be exercised within 15 days at any Provincial traffic Dept of Police (Art172)

NOT IN THE ROAD DECREE - NO FINE

- 37. Light vehicles not having fire extinguisher 0
- 38. Objects on the back seat of vehicle 0
- 39. Driver not wearing shirt or shoes 0
- 40. Wearing sunglasses while driving



Republic of Mozambique
 Ministry of Transport and communications
 National marine Institute
 Maritime Administration of Inhambane



Welcome Dear Tourist, we know that your coming to this country
 Contributes for development of tourism and country itself, but doesn't mean that are over the
 laws which rule this country, then you must do every thing under the regulation of Mozambique.
 Would be happier if were able to collaborate and help our officials as must possible as you can.
 For you who bring the boat there are some taxes to pay, see below:

1. LAUNCHING FEES

These taxes last for the holiday time (1 to 15 day)

Rubber Duck one engine.....	805,00 Mt
Rubber Duck two engine.....	920,00 Mt
Fibber glass boat one engine.....	1035,00 Mt
Fibber glass boat two engine	1150,00 Mt
Fibber glass boat two engine more 100 horsepower each.....	1380,00 Mt
Jet ski.....	575,00 Mt
Sailing boat.....	230,00 Mt
Canoe.....	115,00 Mt

2. DIVING (week)

The underwater gardens are very beautiful and wonderful in Mozambique and not seeing them is
 a loss, who knows the real beauty of gardens always dive

Some taxes to pay per person 300Mt for 1 to 7 days.

Snorkeling and boat.....172.5,00Mt – Pay Person

Nomads Closed 2014 - Cape Vidal 13-17 Oct

The Closed was held at Cape Vidal this year from 13 October to 17 October. Despite the current economic climate we had a good turnout of 10 boats.

As per usual the Nomads family reunited on the Saturday night and rekindled stories of the Rose Bowl and last year's Closed. With age, that's about as far back as most of the memories will allow us to go these days. But as with all trips, new fun was had and new memories were made despite the attempts of the weather to dampen spirits.

The weather had a major impact on the competition and whilst we accept that we can never order good weather, the general feeling around the camp fire were that we need to reconsider September and October for our comps. Even the locals asked why we chose this time of year. In their view, Vidal silts up in the winter and needs the wind and wave action to clear the sand in the launch area, and that wind and wave action arrives in September and October.

Consequently, we lost 3 days of fishing to weather which lends much food for thought for the timing of the Nomads Closed next year.

Notwithstanding the blowouts, we had two days of good fishing albeit that they were not for sissies. A few windy showers blew through and kept the boys on their toes. However once they had blown though and conditions did improve (slightly). Notwithstanding the tough conditions, the perseverance of all the crews resulted in some fine fish being tagged including: two Sallies on **Shaya lo Manzi** and one on **Kaskazi** - all safely released. **Watermark** boated the largest game fish, landing a 16.5kg Yellow fin.

Nauti Boy brought an 8kg Bonnie to the scales caught on 6kg line. There were a number of catches of smaller Yellow fin and Dorado that managed to stretch the scale the required distance.

Of course there were the ones that got away – there were big, massive, gigantic Wahoo that stripped line and bust us off on the horizon. There were also tales of the Sallies that played in the spread and the inevitable monster tuna that got taxed. There were no heads though, so chances are pretty good those stories originated from the 'live bait' fishermen who had been fighting sharks all along. We will never know, but we will be back to test our wits and tackle against the monsters of the deep.

The bad weather meant that the teams spent more time in the camp than intended. Many packed their cooler boxes and headed for the more affluent upper Houghton 8 sleeper units. Unlike the 5 sleepers the larger units were in great shape (apart from the water of course). Needless to say the crews all invaded these hotspots where fishing stories were embellished and we all lived up to the true definition of fishermen – “smelly liars dressed in old clothes”.

The evening gatherings and weigh ins were also concentrated around one of the larger units, and thanks to Alex and his crew for their hospitality – not that he had a choice. Dave Martin our chairman was his usual vibrant self, & added lots of cheer and laughter to the formalities. He was first to acknowledge and heap congratulations on all the anglers that brought fish to the scales.

Deserved praise must go to the competition officer and organizer, Colin Green for a sterling effort. Colin only picked up the reins late in the game but once again organized a great event that was handled safely and professionally and touch wood no mishaps.

It must be said, at the start of the prize giving many longed for the cover of the restaurant provided at Coco-Rico in the previous two years. This year we held our prize giving around the fires at the mercy of the weather gods. Nevertheless, despite the drizzle, the Nomads boys and girls toughed it out while every boat was recognized for their efforts and each boat came away with a prize. In the true spirit of Nomads, the crews were not going to be deprived of their fun, they then proceeded to braai and carry on their embellished stories in the rain. Who needs a tarp anyway??

The competition was divided into two sections this year a game fishing section and a bill fishing section, with overall points determining the top boat. This method of scoring and allocating prizes was well received and resulted in a good distribution of the prizes at the end of the day.

The accolades went to:

Combined Score – Billfish & Gamefish

- 1st Place:** Shaya lo Manzi - (Skipper) Pieter Range
- 2nd Place:** Nauti Boy – (Skipper) Mitch Moore
- 3rd Place:** Kaskazi – (Skipper) Tyron Gruar
- 4th Place:** Watermark – (Skipper) Mark Cockcroft

Boat Score - Billfish

- 1st Place:** Shaya Lo Manzi
- 2nd Place:** Kaskazi

Boat Score – Gamefish

- 1st Place:** Nauti Boy
- 2nd Place:** Watermark
- 3rd Place:** Threesome
- 4th Place:** Ramkat
- 5th Place:** Kaskazi
- 6th Place:** Fish Hunter

Top Angler

- 1st Place:** Tig Andrin - Sailfish & Dorado (Kaskazi)
- 2nd Place:** Wouter Engelbrecht - Sailfish (Shaya lo Manzi)
- 3rd Place:** Pieter Range - Sailfish (Shaya lo Manzi)
- 4th Place:** Mitchell Moore - Bonito & 2 x Yellowfin Tuna (Nauti Boy)

Heaviest Gamefish

- Mark Cockcroft** - Tuna Yellowfin - 16.5kg (Watermark)



In closing, a big "Thank you" to Craig Shorter of Hollards for their generous sponsorship, Wade Martin for the S/Steel fire extinguishers, all of our members who also sponsored & all those involved in the organizing of the competition, Colin, Dave and his committee and not forgetting Sharon our beach controller who even dressed up in a British Bobbies outfit to police the beach.

A thank you also must be extended to those family members who joined us, put up with us and supported us.

A fun time was had by all and we look forward to an even better time, with more boats next year!

Tight lines until then, and those going away travel safely.

Mark Cockroft



Nomads Closed 2014 Pictures



South African Deep Sea Tri-Facet National Championships

17 - 21 November 2014 - Sodwana Bay

It is a great honour to be selected to compete at this level and to have SIX members from Nomads alone is a fantastic achievement. GO NOMADS!

REPRESENTING SOUTHERN GAUTENG

Gamefish - Friedel Kirstein(Cpt) and Mitchell Moore

Light tackle Billfish (Sailfish) - Tyron Guar

Heavy Tackle Billfish (Marlin) - Kevin Allardyce

Representing SADSAA

Light Tackle Billfish (sailfish) - Tig Andrin

Representing SADSAA Masters

Light Tackle Billfish - Trevor Spence

Selector - Anton Gets



Bob Marlin



SADSAA Light Tackle Billfish



Anton Gets



Kaskazi



SGDSAA Heavy Tackle Billfish Team



Kaskazi Launching



SGDSAA Light Tackle Billfish Team



Friedel Kirstein

Mitch Moore

SGDSAA Gamefish Team



Trevor Spence

Nomads Club History - Jackie Pratt

Our club has a long and colourful history, which some of the newer members may not be aware of. I asked, Jackie Pratt who served on the Nomads Committee from 1982 until 1998 to provide some information on Nomads from the early days. Jacky has the following to say:

"I was co-opted on to the job in 1982, when MP Oosthuizen, the Secretary at the time, walked out of the Holiday Inn conference Centre when a referendum of Nomads Members went in favour of admitting members "of colour" into the club (yes really). It also caused a bit of problem as some of the committee members at the time were totally against having a female on the Committee.

They came around eventually when they realised I used the same language and could also catch a fish; those guys became good mates. I remained on the Committee, as Secretary until 1995 and then PRO until 1998 when we moved to the coast.

During that time I was also the scribe and did the regular Newsletters. For 2/3 years from around 1989 I wrote a regular column for Southern Transvaal in the "Great Outdoors" magazine, then when Angler Publications formed Ski-Boat magazine they offered us a regular Advertorial for a small fee. In this way we were able to report on all our competitions etc., and I believe this media coverage went a long way to making Nomads the strong Club it was during those years. When I took over from MP we had less than 300 members and it was predominantly Afrikaans (very difficult for me at the beginning as an ex Brit but I soon learned enough of the lingo to get by). The newsletters were bi-lingual and somebody used to submit Afrikaans articles but we had no computers so I had to retype everything. We built it up to over 800 members and 400 boats at one stage, much of this increase due to the twice yearly skipper's courses which Ted Adams and Dick ran for Southern Transvaal at the Nomads Clubhouse. At that time you needed to be a member of SASBA to get your ticket and register a boat.

Nomads bought me my first 386 PC in the late 80's and I used it mainly for the member database and saved stuff to floppies or stiffies - no email, everything was by fax or post. Rod Patterson, Jacky Pratt, Dave Finlayson and Graham Vollmer compiled the Nomads Handbooks from the very first issue in 1989/90 right up to 2004. This booklet became the "bible" for ski-boaters and was in demand from other clubs who copied it for their own members. SADSAA picked up on the idea and subsequently issued the SADSAA year book, which contains a lot of the stuff from Nomads.

Jackie Pratt
SADSAA Billfish Classic
Tournament Secretary
Cell 0836546922 | Fax: 0866852076



Pic's from yesteryear...



Nomads Closed 2012 - Ponta Do Oura



Southern Gauteng Interclub - 2000 Sodwana



Can Fish See Colour?

Tags: Marlin, Peter B. Wright

Among the questions I get asked the most, two of the most frequent are: "What colours do you prefer in marlin lures?" or "Can marlin see colour?"

Answer number one is "I don't really care", which is only partially true. I tend to prefer colours that I can see. I like colours that allow me to quickly see the lure when I glance back at the baits. Red catches my eye and so does white. Purple isn't bad, and an orange and black combo is quickly picked up by my eye when I look back at the lure spread.

I also like colours that remind me of something that actually exists in the world of marlin food stuff. Blue and white reminds me of flying fish. Both purple, and a combo of red, white, and blue look a lot like the colour I see when I get a side view of skip jack tuna surfing down the waves. Yellow and green is the colour of small dolphin fish and some of the mackerel that most billfish regularly snack on. I have had great success on chocolate or reddish brown lures that look to me like squid and stay down and DON'T make a bubble trail. I think it doesn't really matter.

The answer to the second question is "No one really knows." We have a few ways of making educated guesses but there is still some argument among the top bill fish scientists about what billfish can see.

There is no doubt that some fish (including tuna) have excellent colour vision. The rainbow hued reef fish species that divers and snorkelers revel in should have colour vision, Why else would they be coloured like that? They live near the surface where all the colours of the spectrum still exist and use colour displays for a wide range of behaviour including mating, species recognition, and territorial defence.

Billfish cannot be kept alive in a confined space. We can only look at their eyes and compare them to the eyes of other species: fish, mammals, or reptiles and compare the physiology. From sophisticated experiments on other animals we know which types of cells are necessary to see colour. Marlin eyes are mainly lacking in the types of cells known as "cone" cells needed for colour vision.

Scientists can also analyse the chemicals present in the specialized cells that send the signals to the brain. Marlin retinal cells have a high proportion of the photo active chemicals known from other species to respond to the wave lengths of light in the part of the spectrum we call blue but have little of the chemicals for other colours. The inference has been that marlin see mainly shades of blue (the only colour left at extreme depths), but can't distinguish between other colours and are "colour blind". A new study by an Australian researcher indicates that marlin might have some limited ability to perceive colour.

The only CERTAIN thing about lure colour is that if the lure does not first attract a fisherman it will not get used. If it does not get used it will not get bitten. No marlin, anywhere in the world, has ever stolen a lure from a tackle shop or out of a tackle drawer.

I once brought in a particularly ugly, over skirted, all white with rust stains, lure, that ran like an old rag that a client had asked

me to put out. When asked why, I said it didn't run very well as it had too many skirts.

"I've already weighed one over 1,000 pounds and another over 900 pounds on that lure" was the hurt reply at my rejection of his favourite lure. Needless to say I put it back out and left it out!!

Do Tuna and Billfish see colours?

Research conducted by Dr. Kerstin A Fritsches & Professor Eric J Warrant*: University of Queensland, Australia: * University of Lund, Sweden aims to identify the range of light intensities at which billfish and tuna can still see and hunt effectively.

This question has captivated fishermen and scientists for years. Proving colour vision in this group of fish is particularly difficult since behavioural colour discrimination experiments – the "final proof" of colour vision ability in any animal – are impossible to undertake with such large open ocean fish. Instead, scientists have aimed to establish if billfish and tuna have the necessary 'hardware' in their eyes to discriminate colours.

Since early studies our knowledge of colour vision in fish has greatly improved as have a number of techniques used to study colour vision, especially measuring colour sensitivity using microspectrophotometry (MSP). Using this technique, many fish have now been identified as having supreme colour vision potential (ie Bowmaker, 1995). We have found evidence that the striped marlin at least has the necessary 'hardware' for colour discrimination in the form of three distinctly different visual pigments in its photoreceptors (Fritsches et al.2003b)

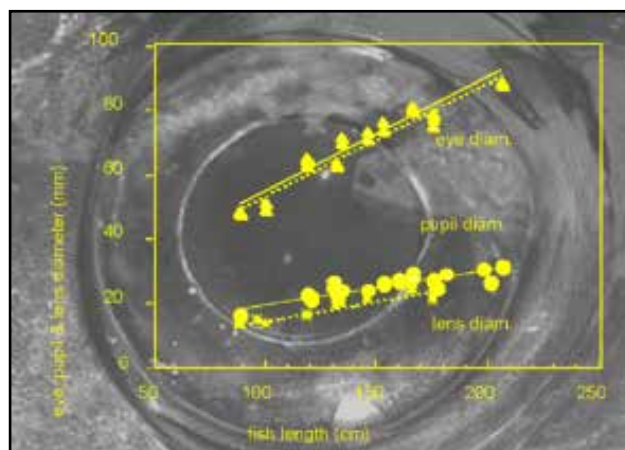
How Important is Vision for Tuna and Billfish?

The large eyes of Billfish and Tuna are designed to function well in deeper, darker water. It is very likely that vision is an important sense for feeding at depth.

1. Big Eyes

Large eyes and a well developed visual centre in the brain suggest that vision is an important sense for these fish. As in any other bony fish the billfish eye grows throughout life, thus the ability to capture light and visual acuity is likely to increase throughout the lifetime of the animal.

In absolute size billfish eyes are among the largest in the animal kingdom. From the correlation of the eye diameter and body length, we predict that the largest swordfish recorded (450cm) had an eye diameter of ca. 19cm.



2.Sensitivity to Dim light

Cones are receptors which receive the light information in the retina and turn it into a nervous signal. In marlin the cones are usually large. The large photoreceptors and the large aperture of the billfish eye result in a high optical sensitivity. This allows the billfish to use its vision when the light is dim at depth.

3.Can They See Colour?

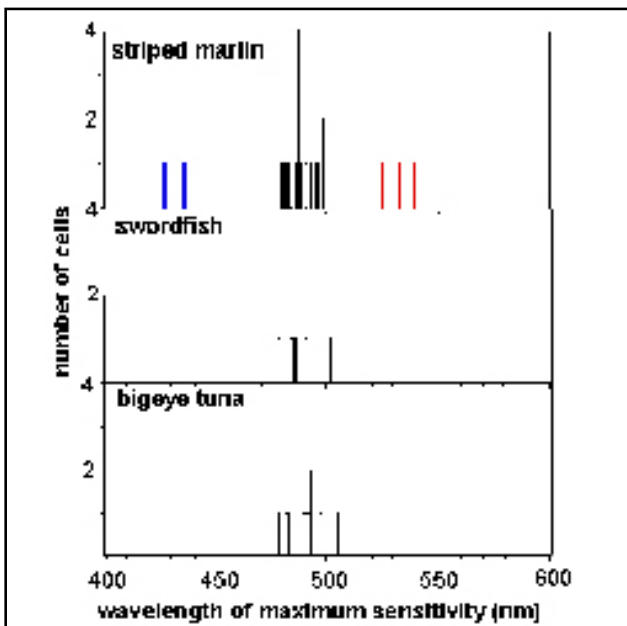
We find that there is a difference between species of both tuna and billfish with respect to colour vision. We test for colour vision by searching for different colour receptors in the eye. If there is only one receptor the animal can only distinguish light from darkness. If we find a combination of receptors reaching to different colours we can assume that the animal has some form of colour vision.

The striped marlin has three receptors which are sensitive to different wavelengths, the basis for a trichromatic colour system. In the swordfish and big eye tuna we have only found one receptor, suggesting that they are probably colour blind. The basis for colour vision in the striped Marlin

In the retinas of two striped marlin we found three different visual pigments. The double cones mainly contain a middle-wave-length pigment with a λ_{max} of 487nm (sensitive to blue-green) while the single cones reveal a shorter pigment of 437nm (sensitive to violet-blue), the third visual pigment which peaks at a longer wavelength with a λ_{max} of 528nm (sensitive to green). The presence of three visual pigments clearly indicates that the striped marlin has the 'hardware' necessary for colour discrimination.(Scientists can now theoretically determine what colours the striped marlin might see.) The three pigments are only present together in the ventral part of the eye which looks up to the brightly lit more colourful environment above the animal. Discriminating colours requires bright light and the three pigments are optimally positioned for colour vision.

4.Why Judging by our own eyes doesn't work with fish

Does a yellow lure, look yellow to a fish too? Not necessarily! Human eyes are good at distinguishing yellows and reds from greens. This is an adaption from our past where when needed to find ripe fruit in a green forest – a very different task to that undertaken by billfish and tuna in their blue world.



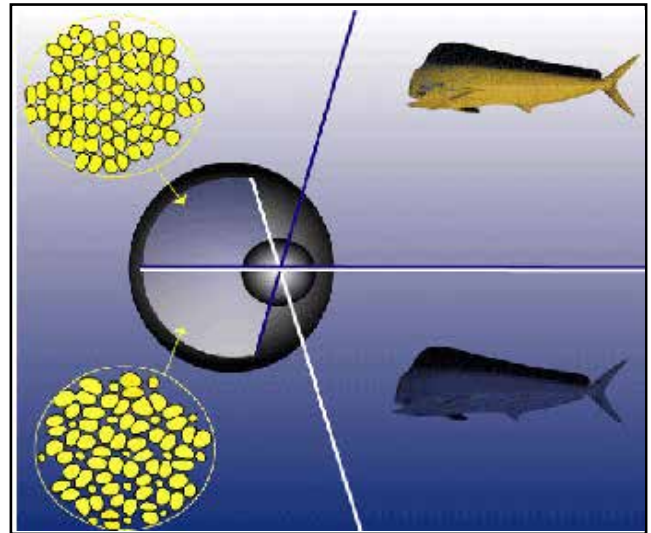
Using microspectrophotometry (MPS) we shine light through individual receptors and identify which colour (or wavelength) the receptor is sensitive to. We repeat this procedure until we find groups of receptors which are sensitive to different wavelengths. Here the striped marlin has three groups of receptors while swordfish and bigeye tuna have only one.

5.A Split World

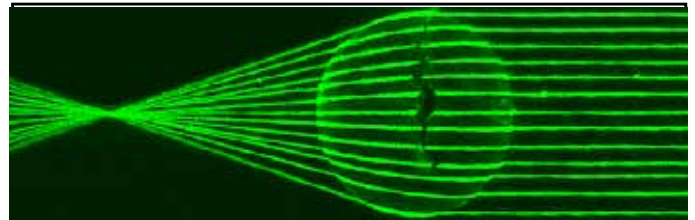
Previous studies have shown that the marlin has optimised its eye to the environment around it. The part of the eye which looks up into the bright and colourful world above the fish is capable of distinguishing colours. The part of the eye which looks down into the dark blue colour can only see this blue and no other colour.

6.Screening for Colour Vision

Fish lenses correction for different colours (Chromatic aberration) if the fish can see colours. The swordfish lens shown above does not have this correction, indicating that colour is not perceived by this fish. We use this lens tracing technique as a screening test to identify which fish are likely to have colour vision(Scale bar 1cm)



Schematic of a marlin eye viewing the colourful world above it with different colour receptors while the blue depth below is seen with a blue receptor



Fish lenses show a correction for different colours (chromatic aberration) if the fish can see colours. The swordfish lens shown above does not have this correction, indicating that colour is not perceived by this fish. We use this lens tracing technique as a screening test to identify which fish are likely to have colour vision (scale bar 1cm).



Developmental Changes in the Visual Pigments of the Yellowfin Tuna, *Thunnus albacares*

Do billfish and tuna distinguish colours? This question has captivated both fishermen and scientists for years. Proving colour vision in this group of fish is particularly difficult since behavioural colour discrimination experiments—the “final proof” of colour vision ability in any animal—are impossible to undertake with such large open ocean fish. Instead, scientists have aimed to establish if billfish and tuna have the necessary ‘hardware’ in their eyes to discriminate colours.

More than 20 years ago two different approaches (pigment



Adult yellowfin possess multiple visual pigments in their retinas. (Photo: W. Boyce, 2000)

extraction by Munz and McFarland 1977 and electrophysiological recordings, Tamura et al. 1972, and Kawamura et al., 1981) were used to try to identify the potential for colour vision in billfish and tuna. Neither technique produced any evidence of potential colour vision in either tuna or billfish. This was considered surprising since billfish and tuna live in a mostly brightly lit and colourful world. However, since these early studies our knowledge of colour vision in fish has greatly improved as have a number of techniques used to study colour vision, especially measuring colour sensitivity using microspectrophotometry (MSP). Using this technique, many fish have now been identified as having supreme colour vision potential (ie. Bowmaker, 1995).

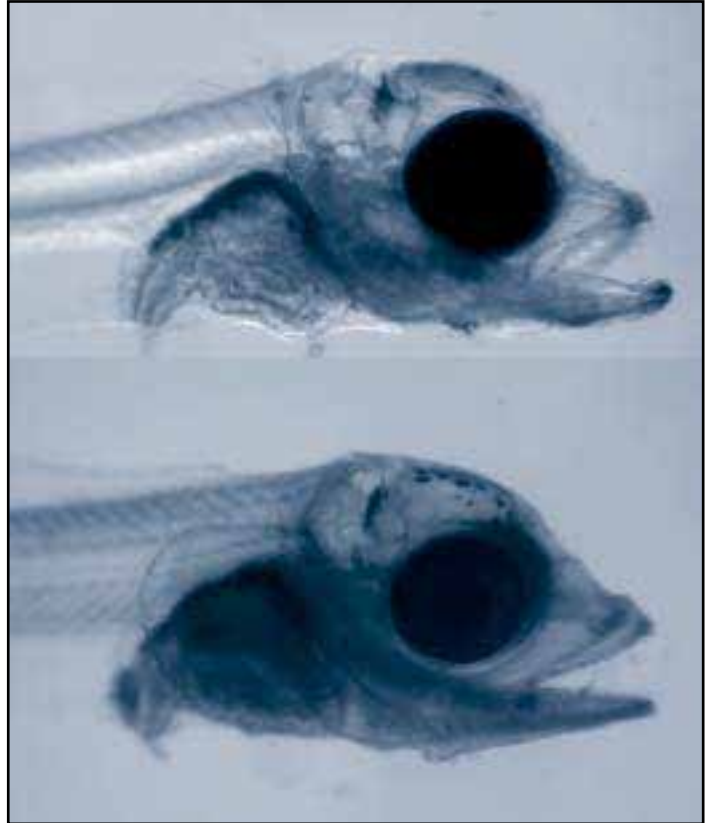
In our current project we found strong anatomical evidence for colour receptors, known as cones, in the marlin eye (Fritsches et al., 2000, 2003a). Hence we decided to reinvestigate the question of colour vision in billfish and tuna using MSP. We have been able to collect suitable tissue both during cruises on the NOAA ships.

Townsend Cromwell and Oscar Sette and with the assistance of recreational fishermen on the East coast of Australia. Samples of billfish and tuna were measured using the MSP set-up at the University of Western Australia, Perth, in collaboration with Drs. Julia Shand and Nicole Thomas.

As a result of this work we found the first evidence to date that the striped marlin at least has the necessary ‘hardware’ for colour discrimination in the form of three distinctly different visual pigments in its photoreceptors (Fritsches et al. 2003b). We were also able to measure the main visual pigments in four other pelagic species—swordfish, bigeye tuna, yellowfin tuna and sailfish. The major visual pigment of all these species is well suited to light in deep and shallow water.

How does MSP work?

Photoreceptors in the eye are designed to collect light information in the form of light particles (photons) and translate this information into electrical impulses, which can be interpreted by the nervous system. All photoreceptors contain



Spectral sensitivity may play an important role in determining feeding success (top-starving, bottom-full gut) in yellowfin larvae. (Photo: E. Loew, 2001)

visual pigments, which are sensitive to a particular wavelength (or colour) of light. This means that more photons of one wavelength are absorbed than of any other wavelength. If the retina contains different classes of cone photoreceptors with visual pigments tuned to different wavelengths, there is the basis for colour discrimination. Using an MSP we can determine the preferred wavelength of individual photoreceptors. However this can only be done if the tissue is collected from the eyes of freshly killed fish that had little exposure to light, a challenge when working with billfish or tuna. A microscopic beam of light is directed through the light-gathering outer segment of the photoreceptor. The beam of light changes its wavelength step-by-step and a sensor records how much light at each wavelength is absorbed in the cell. The preferred wavelength of the individual photoreceptor is found where the absorbance of the cell peaks (the I_{max} , see Figure 2).

A Basis for Colour Vision in the Striped Marlin

In the retinas of two striped marlin we found three different visual pigments. The double cones mainly contain a middle-wavelength pigment with a I_{max} of 487nm (sensitive to blue-green) while the single cones reveal a shorter pigment

at 437nm (sensitive to violet-blue). The retina of the striped marlin surprisingly contains a third visual pigment which peaks at a longer wavelength with a λ_{max} of 528nm (sensitive to green). This third pigment is most likely housed in one of the two cells of an uneven double cone, with the other partner containing a 487nm pigment. We were not able to determine the colour sensitivity of the rods—the receptors specialised for night vision—in this species.

What Does This Mean?

The presence of three visual pigments clearly indicates that the striped marlin has the ‘hardware’ necessary for colour discrimination. It is also interesting that the three pigments are only present together in the ventral part of the eye which looks up to the brightly lit and more colourful environment above the animal (Figure 4).

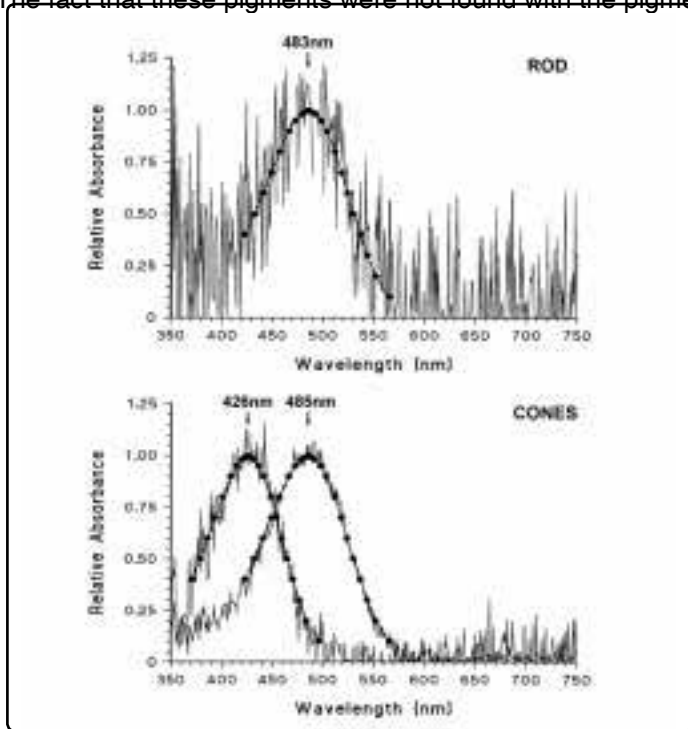
Discriminating colours requires bright light and the three pigments are optimally positioned for colour vision.

The part of the eye looking down into the darker water below the fish, contains mainly the middle wavelength, blue-green sensitive pigment (λ_{max} 487nm). This pigment is perfectly matched to the colour of the prevailing light in deeper water, allowing the fish to ‘catch’ as much light as possible in deeper, darker waters.

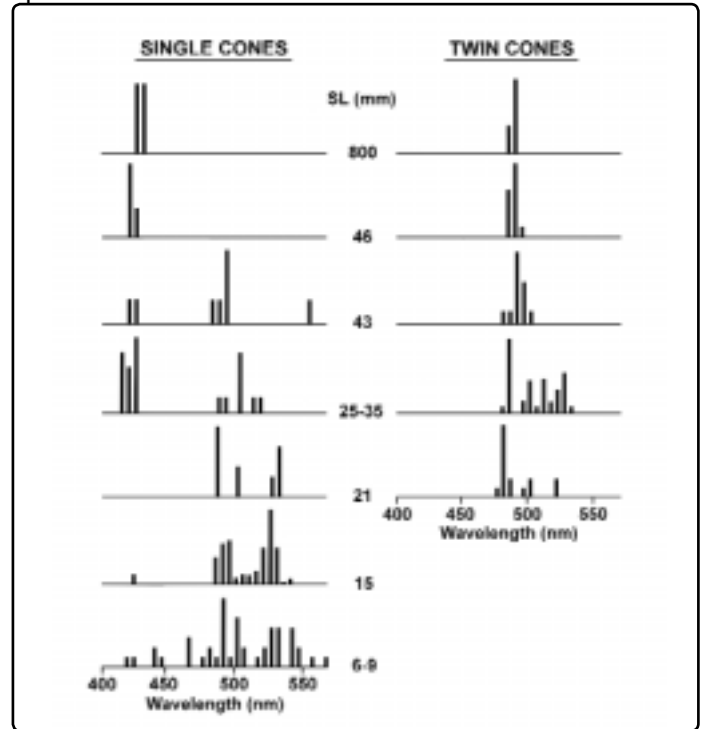
The fact that these pigments were not found with the pigment

extraction technique by Munz and McFarland is not surprising since this method is less specific and sensitive than MSP (McFarland, personal communication). However, it is more puzzling that the electrophysiological recordings did not reveal the visual pigments present in the striped marlin. A possible explanation could be that only a relatively small number of cells were tested in this species and the authors, probably unaware of the differences in cone distribution between dorsal and ventral retina, did not specify which area of the eye they tested. Using the new evidence of different visual pigments described here we will also use electrophysiological methods to clarify this present discrepancy.

But does the presence of three visual pigments mean striped marlin can discriminate colours? Different visual pigments located in different photoreceptors are a prerequisite for any colour vision system, so the striped marlin definitely possesses the ‘hardware’ for this ability. We will now have to establish whether this colour information is further processed in the eye. However, since we have identified the exact colours the receptors are sensitive to, we can now theoretically determine what colours the striped marlin might see. Given the strong support we have received from our industry partners and the fishing and fisheries communities at large we might now be able to design some behavioural trials, for instance to test fish responses to lures.



Typical normalized spectral absorbance curves from the photoreceptor cells of adult yellowfin



The frequency distribution of peak absorbance of single and twin ones at the standard lengths (SL) indicated for yellowfin.

“Do Tuna and Billfish See Colours?” & “Developmental Changes in the Visual Pigments of the Yellowfin Tuna, *Thunnus albacares*” info courtesy of:

PFRP



**Pelagic Fisheries
Research Program**



university of hawai'i at mānoa

Recipe of the Month

Fried Fish - sent in by Lyn Adams

- Catch a decent fish I like all fish but Rock cod is my favourite.
- Fillet and debone fish. No bones and no skin.
- Place a good helping of Chilly Bite Mix on a Plate *(One can also use self raising flour.)*
- Beat two eggs in a bowl.
- Coat fish on both sides with the Chilly Bite Mix
- Dip fish into the Egg ensure both sides are egged.
- Place prepared fish into a pan of hot oil.
- Fry fish on a medium to high heat 2 to 3 minutes on both sides depending on the thickness of the fish. Must be golden brown in colour.
- Remove fish from pan when cooked and place on a plate, lined with a Paper Towel.
- Serve fish hot or cold seasoned with salt and a little pepper with Lemon wedges. Garnish with fresh Dhania.

Lock doors in case you get visitors, too nice to share



Watermelon Shots

Here's How To Impress All Your Friends At A Braai This Summer

As summer continues on, we're seeing ourselves attend more and more Braai's with less and less ideas of what to bring. Well, here's a recipe that will get all your friends swooning over you and inviting to you every party they have from now till forever.

For this recipe you will need 4 ingredients:

- 4 3-ounce boxes of Red Jello
- 2 1-ounce boxes of unflavored gelatin
- 4 cups of vodka
- 1 12-16lb watermelon

After you've gathered those ingredients, you will need the following materials:

- Paper towels
- 2 large bowls (one to mix the Jell-O, and one for the watermelon meat you scoop out)
- 2 cookie sheets or baking dishes (big enough to hold the watermelons while they're in the fridge)
- Liquid measuring cup
- A pot (to boil the water)
- Cutting board
- Spoon or Ice Cream scoop (for getting the watermelon meat out)
- Whisk (or fork if you don't have one)
- Chef's knife (for slicing the watermelon)

Now that you have all your prep materials, you're ready to start concocting!

XXL WATERMELON JELL-O SHOTS

4 3-OUNCE BOXES
RED JELL-O

+

2 1-OUNCE BOXES
UNFLAVORED
GELATIN

+

4 CUPS
VODKA

+

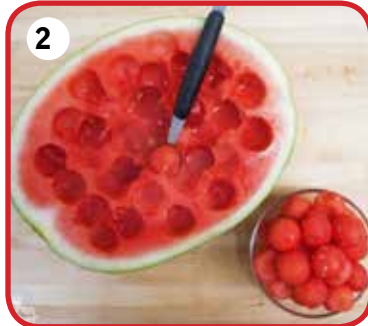
1 12-16 POUND
WATERMELON





1 First, cut the watermelon in half, hot dog style (vertical). Try to find a flatter part for the basis of your cut on one half so that the watermelon will be able to lay on it's side later.

Your halves will look a little something like this.



2 For the next step you can use your own creativity. If you want to use the watermelon for a fruit salad or just some watermelon on a stick, grab an ice cream scoop or a melon baller and scoop the pieces out. This will equally impress your friends!



3 The goal of this step is to get all the meat out of the watermelon and get something like this. You can also accomplish this by scooping the pieces out with a regular spoon and eating everything (or saving it for later).



4 Next, grab those baking trays and lay down some paper towels to prevent the watermelon halves from moving around while in the fridge. Place one paper towel in the middle, then fold two other sheets and place them on either side so the watermelon will sit in the middle.



5 Now, grab one of your bowls and combine the jello mixes and the unflavored gelatin.

Looks like pretty sand art!



6 Boil your water, add 4 cups of the boiling water, and whisk for 2 minutes until everything has dissolved. It's starting to smell good already!

Now for the fun part - add in the 4 cups of vodka!



7 Pour the mixture into the watermelon halves, splitting between the two.



8 Now the not so fun part - refrigerate the halves for at least 4 hours until the Jell-O is firm.

You might notice that the Jell-O has lost some of its volume as the hours have gone by, but that's okay! There's still plenty there.



9 Once it is all set, get your chopping board and knife and begin by slicing each half into 1 inch pieces across.



10 Then cut into smaller 2 or 3 smaller wedges.

And VIOLÁ!

Boozy slices of watermelon for the adults, and regular watermelon for the kiddos. Your friends and family will love you forever, not that they don't already!



Check this out! Click on the link

Better Than a World Record

www.youtube.com/watch?v=WuHS0EWZILE



A young man and an old man were fishing on a ski boat for Cape Salmon. The young man started telling the old one that the night before he caught a Salmon that was over 2 meters long.

The old man replied “Oh yea, well I was here 2 nights ago and I hooked something huge. After a 30 minute fight I finally got it up and it was an old lantern and the thing was still lit.”

The young man said “You’re lying. I can’t believe that.”

Then the old man said “I’ll tell you what, you knock a metre off your Salmon and I’ll blow out my lantern.”

**Please contribute to our next issue. Send pics, links and other information to
E-mail: tyron@act1rentals.co.za**

Happy
Holidays

