



NOMADS GAME FISHING CLUB
PRESENTS THE NOMADS CLOSED

Hollard.

NOMADS CLOSED



Rowlin National
BROKERS

CAPE VIDAL,
KZN

ENTRY FEE

- R1200.00 PER NOMADS MEMBERS
- R1500.00 PER NON-MEMBER.
- R750.00 FOR NONE-FISHING CREW

FISHING: 16-20 JUNE 2025

PLEASE EMAIL ENTRY FORMS AND P.O.P TO:

NOMADSFISHING@GMAIL.COM

LINE CLASS: 6KG, 10KG, 15KG & 37KG

2025 NOMADS CLOSED KEY ROLE PLAYERS

Hosts	Nomads Game Fishing Club
Tournament Director	Dries Liebenberg & Dries de la Rey
Tournament Secretary	Kevin Allardyce
Weigh Master	Teams To Be Appointed (TBA) at the briefing
Scoring & Results	Sharon Cockcroft, Dries Liebenberg & Dries de la Rey
Tackle Master	Shaun Aspden & Adrian Feher
Radio Beach Control	To Be Allocated at the Briefing
Priority Boats	Boats TBA at the briefing
Closed Committee	Dries de la Rey, Chrisjan Jansen, Kevin Allardyce, Mark Cockcroft Dries Liebenberg, Shaun Aspden, Gus Pinker, Colin Green & Adrian Feher
Safety and Weather	Mark Cockcroft & Dries Liebenberg
Camera Photos	Sumari Jansen

PROGRAMME

Tuesday 21 May 2025

18H00 Virtual Tackle Box and Rules Briefing
This is compulsory for all skippers

Sunday 15 June 2025

14h00 – 15h30 Registration and Goody bag collection at Marquee Tent
17h30 – 19h00 Briefing followed by Dinner at Marquee Tent
Compulsory attendance for all skippers & anglers taking part. (Bring own drinks)
Please wear your Team Shirt (Boat Name)

Monday to Thursday, 16 - 19 June 2025

Launching First light from **Cape Vidal** launch Only
Lines down After Launching
Lines up Skipper or crew must be at weigh in with catch before 16h00
Weigh In Marquee Tent 15h00 – 17h00

*Weigh In closes at **16H00** ** crew members must be in the queue with catch NO EXCEPTIONS ***

Wednesday Evening function 18 June 2025

18h30 Bring and Braai Meal & Club Spirit evening at Marquee Tent
Compulsory attendance for all skippers & anglers taking part.
Bring own drinks and wear your team shirts (Boat Name)

Friday 16 June 2025

Launching First light from **Cape Vidal** launch Only
Lines down After Launching
Lines up Skipper or crew must be at weigh in with catch before 16h00
Weigh In Marquee Tent 14h00 – 16h00

*Weigh In closes at **15h00** ** crew members must be in the queue with catch NO EXCEPTIONS ***

Friday Evening 16 June 2025

18H00 Closing function & Prize giving followed by dinner.
Will be at the Marquee Tent, please bring your own drinks
Please wear your Team Shirt (Boat Name)

DAILY HAPPY HOUR

Sponsored Drinks and snacks will be provided daily at the Weigh In, please enjoy.

ENTRY FEES

Entry fee of R1 200 for Nomads Member (**R1 500 for Non-Members**), to be paid prior to the competition commences, will include:

- Individual goodies bags with contents
- Sunday evening meal after registration & competition briefing
- Wednesday night social and evening meal
- Friday evening - closing & Prize giving dinner
- Prizes

IMPORTANT DOCUMENTATION AND INFORMATION

- All boats must be in possession of a 2025 Seaworthy Certificate
- All Skippers must be in possession of a valid Skippers Ticket.
- Minimum of 2 anglers and a maximum of 6 anglers per boat (boat permitting)
- All Boats to have a working and licensed Marine VHF Radio on board and working for the duration of the competition.
- All anglers to have a valid 2025 fishing license.
- All boats need to have 1 launching sheet per day (5 in total)

BOAT FUEL/OIL

Teams to supply their own fuel and oil for the duration of the Competition.

MEDICAL ATTENDANCE AT CAPE VIDAL DURING THE CLOSED IN 2025

NSRI Station 40 in St Lucia has been made aware of this competition and will be on standby for the duration of the competition. There will be First Aiders on the competition committee.

RADIOS/RADIO PROCEDURE / CALL – UPS & Communication

- All boats are to ensure they have a working radio prior to launching each day.
- A radio test must be performed with Beach control prior to launching each day.
- Should a boat develop problems with the radio during a day's fishing, it is the skipper's responsibility to ensure messages get relayed to and from him and to satisfy Beach Control that the boat's radio has been repaired and is working properly prior to launching the following day.
- All radio communications during the competition hours will take place on channel **68VHF** and on the competition **WhatsApp group**.
- Call-ups will be 09h05 and 12h05.
- All boats will be called up each day (Monday – Friday).
- Your position and catch must be given
- Any billfish strikes or hook-ups must be reported immediately to Beach Control.
 - Report your position, time and Line Class to Beach Control.

Any boat not responding to call ups for the day will be disqualified by the Competition Committee

SAFETY / WEATHER COMMITTEE

The Safety/Weather committee appointed will be made up of the Tournament Director and Club Captain as well as Two other selected skippers (Smallest boats in the fleet).

- Any boat that runs out of fuel will be disqualified for the day.
- All anglers will wear life jackets during launching and beaching.
- Please adhere to the boundaries on the sea chart provided.
- Please ensure drogue anchors are correctly attached and easily accessible should the need arise.

BLOW OUTS

- The competition will run for the duration of the five days previously mentioned.
- Should the weather be inclement (bad) but fishable it will be each Skipper's decision whether he / she launches on that day.
- However, in the event of extreme weather conditions, the Safety/Weather committee reserves the right to cancel or postpone the competition, either prior to, or after the first boats have launched.
- Should launching be unfavorable at first light, a final decision as to whether to launch or not will be given by 10h00 the latest.
- Should the wind speed exceed 22 knots (Force 6), the Safety/Weather Committee will immediately call the competition off. (This is a SADSAA regulation).
- Should the competition be called off whilst boats are out at sea, all boats will return immediately to the Cape Vidal Launch Site. Should a boat be fighting a fish, then that line must be cut immediately for the boat to return safely to base.

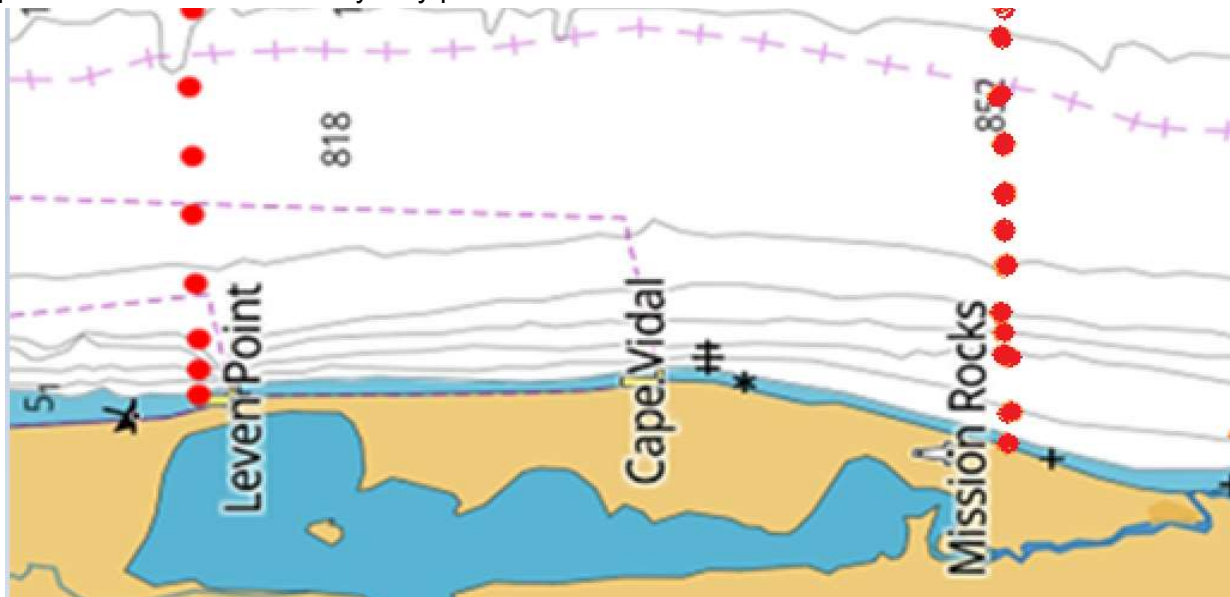
FISHING AREA

The Fishing Boundaries will be as follows:

- Northern Boundary – Leven Point
- Southern Boundary – Mission Rocks

Skippers with Cat C License may only proceed 15 nm out to sea.

Skippers with Cat B License may only proceed 40 nm out to sea.



FISHING HOURS

- Launching from Cape Vidal Launch site from first light.
- Lines down will be after launching, there will be no back-line rule.
- There will be no lines-up time during the duration of the competition. However, all skippers or crew members wanting to weigh fish or confirm a billfish, GT or Kingfish release must be in the queue at weigh-in before the gallows close as stated in the program with their catch.
- The Competition Committee may change fishing hours depending on launch & weather conditions.
- Under no circumstances will competition boats, whether they have caught fish during that day or not, be allowed to fish later than the competition hours as specified. All boats are to be beached or be at backline, waiting to beach no later than 15h00.
- Anglers arriving at the Gallows after cut-off times (16h00 Monday to Thursday or 15h00 on Friday) will not receive a score for the day.
- No extra time will be allowed.

BEACH CONTROL & TRACTOR

- Beach/Competition Control will be allocated to one or two of the boats in the competition fleet.
- A Tractor will be available to assist with launching and retrieving boats at an additional cost.
 - The tractor will only launch boats that have push plates fitted.
 - The Tractor driver or Nomads Game Fishing Club will not be held responsible for any damage or injury resulting from the use of the tractor when launching and beaching.
 - The use of this facility is entirely optional.

Beach Control will always liaise with the Tournament Director and Competition Committee regarding decisions / incidents / problems etc.

LAUNCHING & LAUNCH SHEETS

- Launching and beaching daily will be permitted from Cape Vidal launch site Only.
- Launch / weigh sheets will be issued to each skipper on Sunday 15 June 2025 at registration.
- All skippers must hand in their launch/weigh sheet daily at the Beach Control, before launching.
- Launching sheets **MUST** clearly indicate the line class nominated for the day
- Launch sheets If your launch sheet is not received, you will not receive a score for that day.

LINE CLASS

1. The competition has been structured for the following SADSAA approved line classes:

6 KG	10 KG	15 KG	37 KG
-------------	--------------	--------------	--------------

2. The IGFA rule relating to backing is in force.
3. The Skipper must nominate the line class being used by the boat for that day, prior to launching.
4. Only one line class per boat per day is allowed for all anglers on the boat.
5. Should any angler be found to utilize a heavier line than nominated, the boat on which he is fishing, the angler himself and all other anglers on that boat will be disqualified for that day and all days prior where the same line class was specified. The Tackle Master may test your line at any given time during the competition.
6. Should a line test prove that an angler's line breaks over his nominated class for the day, all fish will be calculated at the next line class category. E.g.:
 - Nominated Line Class is 6kg
 - Line Breaks ≥ 6.1 but ≤ 7.9 kg
 - Points will be calculated using the 10kg line formula
 - If the line breaks on 2kgs or more than nominated for, team disqualification under ruling number **5**
7. The line tester will be available to all anglers prior to the competition before the briefing, if any angler wishes to have his line tested beforehand.
8. The only instance where a line class greater than the nominated line class will be allowed on the boat, is when the line in question is to be utilized for the purpose of pulling a teaser.

RULES OF THE COMPETITION

- All SADSAA Rules will apply to this competition
- Juniors must be under the age of **16 years** at the start of the competition.
- All Skippers to be NOMADS club members.
- Non-anglers will not be permitted on boats, unless approved by the competition committee.
- No harassing of Dolphins or other mammals as per Marine Bylaws.
- No anchoring will be allowed.
- Offset Circle Hooks are not allowed.
- Spooning will be allowed provided the spoon is less than 150grams

FISHING TACKLE

- IGFA Rules will apply.
- Any form of teaser may be used provided it conforms to IGFA regulations.
- Fishing tackle may be checked daily on a random basis. And your tacklebox and boat may be checked. (Please avail yourself of the facility to test your lines prior to fishing on Monday, as we are experiencing more and more problems with line breaking above its specified breaking point).
- The line tester will be available for competitors to test their lines by arrangement with the Tackle Master

TACKLE COMMITTEE CONTROL

- Each team may have their tackle checked daily by the Tackle Inspector.
- The tackle committee members may request line / leaders from anglers to be tested and may board your boat at any time to inspect your tackle box.
- The rod, reel and terminal tackle which caught any Billfish or fish which may count as the most meritorious fish for the day must be taken to the weigh in.

NUMBER OF RODS

There are no restrictions on the number of fishing rods carried on the boat or used by any angler at any one time. It has therefore been decided that no cognizance shall be taken of the number of anglers on the boat when calculating the "Overall or Daily Boat Prizes".

WEIGH-IN

- The weigh-in will be held at the wooden shack close to the fuel pump, opposite the Marque Tent and the beach boom gate.
- All anglers wishing to weigh fish must be at the weigh-in before the cut off times stated in the program.
- Any skipper/delegate arriving at the weigh in after the specified time, will not receive a score for that day.
- The weigh-in must be attended by the Skipper or his delegate and will be supervised by the Weigh Master and his assistants.
- The score sheets will be signed daily by the Skipper or his delegate and witnessed.

POINTS SCORING

- The SADSAA points scoring system will be used.
- This system gives benefit to larger fish caught than the line strength used.
- Whatever the line strength used, a one-to-one fish (i.e. 10kg fish on 10kg line) gives a score of 32 points.
- Fish weight, divided by line strength in kilograms, the result squared and then multiplied by 32.

METHOD OF CALCULATION

The points for each individual fish will be calculated as follows: $\text{Score} = (\text{Weight} / \text{Line Strength})^2 \times 32$

For example:

A 30kg Yellowfin Tuna on 10kg line 30
divided by 10 = 3 x 3 = 9 x 32 = 288
points.

Species	Min Weights	Line Class	Points
Sailfish	Release	6kg	550
		10kg	201
		15kg	110
		37kg	50
Spearfish	Release	6kg	600
		10kg	280
		15kg	150
		37kg	60
Marlin	Release	6kg	1 600
		10kg	600
		15kg	500
		37kg	450
All Kingfish	Release	6kg	All released GT and Kingfish will be allocated points according to the fish measure chart.
		10kg	
		15kg	
		37kg	
Yellow Fin Tuna	Min weight 5.0kg	6kg	SADSAA points scoring Calculation
		10kg	
		15kg	
		37kg	
Other Gamefish	Min weight 4.0kg	6kg	SADSAA points scoring Calculation
		10kg	
		15kg	
		37kg	

SPECIAL BONUS POINTS (as per the multiplication factor)

- Bonus points* will be awarded to a boat for the number of different species of fish/releases weighed each day.

The Bonus points are added to the final total points for the boat per day provided the boat qualifies as per the below:

3	species caught	=	Total Points multiplied by 2 (<i>excluding billfish points</i>)
4	species caught	=	Total Points multiplied by 3 (<i>excluding billfish points</i>)

- 5 Bonus points** will be awarded to a billfish caught on a circle hook; a clear photograph must be produced.
- No bonus points will be awarded for tagging a fish.
- Billfish **WILL** count as a species multiplier; however, the points will not be included in the multiplication calculation.
- The billfish points awarded by each line class will be added to the day's points, after calculations.

*Please note: These bonus points are awarded to the boat and not to the individual angler, irrespective of the number of anglers on the boat on the following basis. To qualify as a "species" the fish must weigh more than the minimum mass as per the rules. (**Undersized fish do not qualify**).*

SPECIES LIMITATIONS

- Each Boat may only weigh a maximum of **10 (ten) fish daily**.
- Each Angler may only weigh a maximum of **5 (Five) fish daily**.
- Each boat may weigh a maximum of **(15) FIFTEEN** fish of any one species during the 5-day competition, irrespective of the weight of the fish, number of anglers on the boat, or the number of days fished.
- No sharks will count in the competition.
- KaKaap/Green Jobfish (*Aprion virescens*) MAY NOT be caught or kept.
- No Bottom fish MAY BE BOATED.
- All GT Kingfish (*Ignobilas*) will count as (1) one species – **Catch, measure & release**
- All other Kingfish species will be considered as (1) one species only - **Catch, measure & release**
- All Marlin will be considered as (1) one species only – **Catch & release**
- All Spearfish and sailfish will be considered as (1) one species only – **Catch & release**
- All Tuna species will count on their own as an individual specie e.g., Yellowfin.
- All Bonito Species will count on as one specie Skipjack, Kawakawa, Sarda-Sarda etc.

All Billfish, GT & Kingfish Species will be released in this competition.
--

BILLFISH RELEASE PROCEDURE

ALL Billfish caught in this competition are to be released. Under no circumstances must a Billfish be brought to the beach after a day's fishing.

Billfish must be brought alongside the boat and photographed, a photograph of the fish must be provided at the gallows before the cut-of time for that day and must include:

- Correct date and time of the catch.
- A billfish release will count if all the following criteria are met:
 - The leader the fish is caught on, is in hand.
 - The fish can be easily identified in the photograph. (Does not need to be removed from the water)
 - The correct color armband, (color or shape requested by beach control)
 - If the fish is not identifiable, then it will not count as a catch.
 - The photos / video is to be in a digital format, which can be downloaded.

MULTIPLE HOOK UPS.

In the event of a double or a triple billfish release, the team are to liaise with Beach Control regarding color coding of arm bands or symbols required in the photograph.

- A Witness boat can be called to video or photograph the release of multiple hookups.
- As an alternative to a Witness Boat, continuous video must be provided showing the successful release of multiple fish also meeting the standard release requirements.

WITNESS BOATS.

- NOT required but can help others with multiple hook-ups.
- The witness boat to radio the number of successful releases to the Beach Control.

THERE ARE NO BONUS POINTS FOR WITNESS BOATS

RELEASING FISH OTHER THAN BILLFISH

Other than Billfish, Giant Trevally and all Kingfish must be released.

- **Species**

- Giant Trevally (*Caranx ignobilis*) will be considered a species on its own
- All other Kingfish will be considered as a single species
- All Yellowtail/*Seriola* Species will be considered a general gamefish and must be brought to the scales for point scoring (min 4kg). These will count as a single species and include:
 - Amberjack
 - Tropical Yellowtail
 - Cape Yellowtail

- **Stickers**

- A sticker / measuring device will be provided with the Goody Bag for each boat at registration, for use to measure these game fish before releasing.

- **Photographing the Fish**

- The fish must be brought on board the boat, placed on the sticker, with the tail fork not protruding over the indicated tail side of the sticker.
- In the photograph, the entire sticker and the entire fish must be visible.
- The sticker must be shown to be stretched to its full length without any folds or creases.
- The color armband issued for the day must be visible in the photograph.
- A single photograph showing all the above, with the date and time of the catch must be provided.
- A photograph showing the release of the fish with date and time must also be provided.
- All fish photographed are above the minimum size as indicated by the sticker.
- Should the size calculation calculate the fish to be below 4kg. The fish will be seen as underweight, irrespective of its Species.
- All fish caught on a single day vary by at least one-color band of the sticker in size.
- No Double up Fish on the same sticker will be allowed
- There will be no daily limit on fish that is caught and released.

BAIT

- Teams are to supply their own bait.
- No swapping of bait is allowed at sea.
- No live bait allowed on boats prior to launching.
- Breach of rules will result in disqualification.

PROTESTS

Any protest made by any angler against the conduct or practices of another angler or boat must be made in writing and handed to the TOURNAMENT DIRECTOR within **30 minutes** of the end of the weigh in on the day of the incident in question. A protest must be accompanied by a protest fee of **R500,00 CASH** which is refundable should the protest be upheld. Protests must be handled through the club captains.

BREACH OF RULES OR MISCONDUCT

A Boat and its anglers may be disqualified for the day, if they are found to be in breach of the rules and/or procedures. Serious breaches of the rules or misconduct could result in the disqualification BY THE COMPETITION COMMITTEE.

Any incidents occurring which are not covered in these rules will be decided upon by the Tournament Director and the Competition Committee. The decisions made will be final and binding.