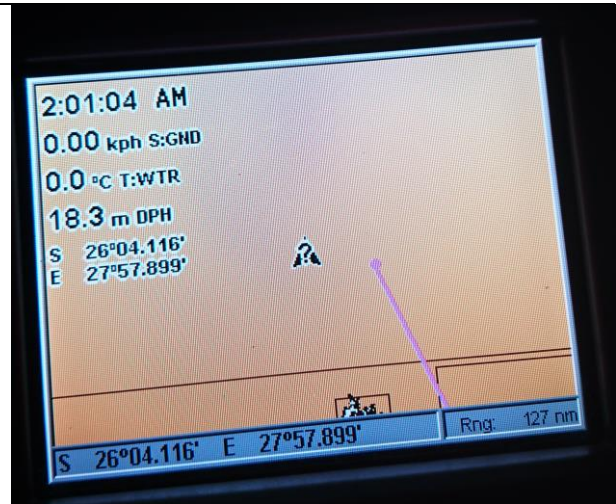


Linking a GPS to the VHF radio



No signal from GPS



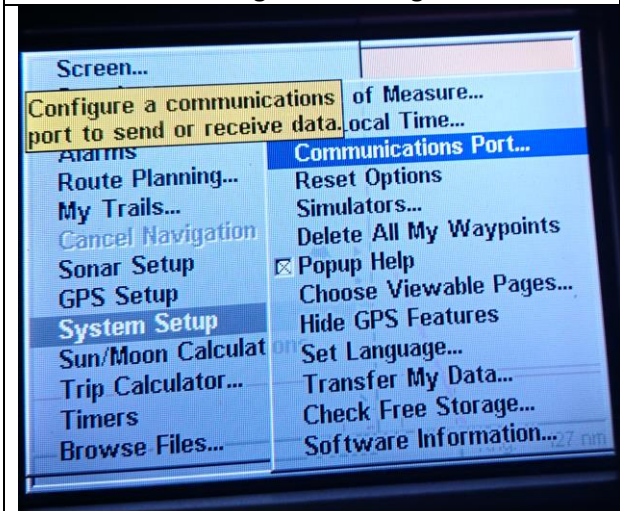
GPS showing current co-ordinates



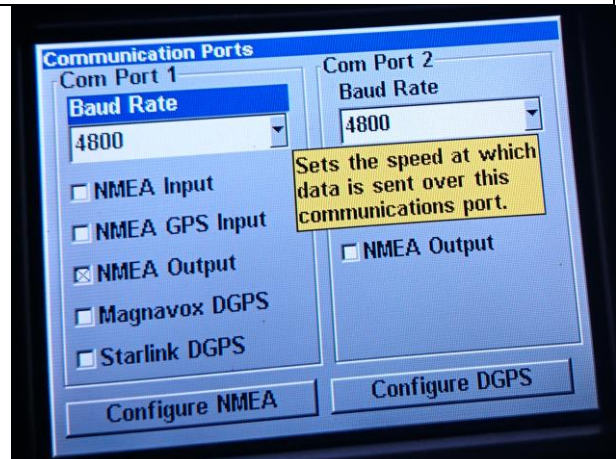
Radio receiving and showing GPS data

Couple of notes

1. You do not need a MMSI number to interface the two units
2. Wiring is for Lowrance GPS to a Lowrance radio but it works for NMEA0813
 - Yellow (gps) to yellow (radio)
 - Blue (gps) to green (radio)
 - Unshielded (gps) to black (radio)
3. On the GPS you need to configure your communications port under System Setup to:
 - Baud rate: 4800
 - Ensure that NMEA Output is enabled.



On GPS: System Setup / Communications Port



Set BAUD Rate to 4800 and Enable NMEA Output